

SUPA TANK



AQUAPOD

A FRESH APPROACH TO TANK DESIGN



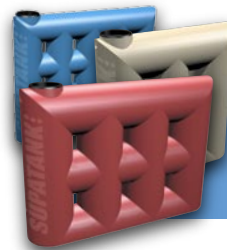
Premium Quality Rainwater Tanks

The highest quality UV stable polyethylene • Easily fits down the side of the home
Available in a range of colours and sizes • High strength & rigidity • Corrosion free

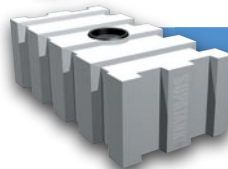
- The highest quality material
- ultra UV (UV20) Polyethylene
- Built to last - one-piece cylindrical construction ensures 'hoop' strength and stability
- Genuine 25 year repair or replacement warranty
- Industry leading quality control procedures including water fill tests on every tank
- 100% Australian - Designed, owned, manufactured and operated in Australia



| ROUND TANKS | DIA | HEIGHT |
|------------------|------|--------|
| 2000 L - Tower | 1080 | 2400 |
| 5000 L - Aquapod | 1800 | 2150 |



| SLIMLINE TANKS | DIMENSIONS |
|------------------|----------------------|
| 1000 L - Aquapod | 395W x 1890L x 1795H |
| 2000 L - Aquapod | 650W x 2150L x 2000H |
| 3000 L - Aquapod | 650W x 2900L x 2100H |



| UNDERDECK | DIMENSIONS |
|----------------|----------------------|
| 2000 L Deckpod | 1200W x 2400L x 825H |



| PUMP COVER | DIMENSIONS |
|------------|--------------------|
| Pump Cover | 400W x 700L x 600H |

Available colours

(due to print processes colours shown may not exactly match actual tank colours. Other colours available on request)

| | | | | | | |
|----------------|------------|--------------|--------------|-------------|---------------|-------|
| Heritage Green | Rivergum | Mist Green | Heritage Red | Black | Merino | Wheat |
| Beige | Birch Grey | Smooth Cream | Slate Grey | Torres Blue | Mountain Blue | White |

